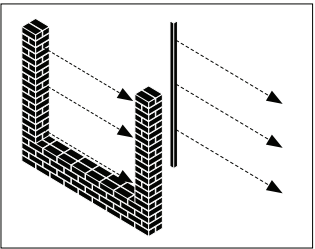


# A Checklist to get you started:

We created a checklist to help you decide what components and accessories you need to create the right EliteScreen for your needs.

- » To start take measurement between wall or post at 3 points: top, middle and bottom. Take note of the smallest width measurement.



- » **Choose between**  
1800mm (w) x 1200mm (h) Aluminium Slat Box or  
2400mm (w) x 1800mm (h) Aluminium Slat Box.
- » **Do you need a gate?**  
**Required:**  
1000mm (w) x 1800mm (h) Aluminium Slat Box  
Pedestrian Gate - Hinge (sold separately)  
Pedestrian Gate Lokk Latch Deluxe (sold separately)
- » **Do you want to convert your EliteScreen to a Louvre?**  
**Required:**  
Louvre Brackets (sold separately in pairs).
- » **Are you installing your EliteScreen on a deck or concrete base?**  
**Required:**  
1800mm Standard Aluminium Post 50mm x50mm  
Base Plate Set 50mm (includes fixings)  
**Or add 1800 mm Heavy Duty Aluminium Post 65 x 65 mm:**  
Heavy Duty Aluminium Post 65 x 65 mm  
Base Plate Set 65mm (includes fixings)
- » **Do you need to concrete your posts into the ground? (Recommended - 600 mm depth hole)**  
**Required:**  
2400 mm Standard Aluminium Post 50mm x 50mm  
2400 mm Heavy Duty Aluminium Post 65mm x 65mm
- » Use a Centre Support Rail if you wish to create more stability in the middle of your EliteScreen
- » Additional Spacer Blocks, Top Caps and Aluminium Slats can be purchased to further modify the look of your EliteScreen.

Trade tip: Use extra side frames to create more screens with offcuts or unused slats from EliteScreen packs



The new modular aluminium screening kit with a patented no weld system is now available in New Zealand. The simple push together system makes it quick to install with no welding or screwing required, providing that flawless look. Slats can be easily adjusted with 9mm, 15mm and 20mm spacing blocks included in the kits. Desired widths and heights can also be easily cut to size on site. Available in a range of contemporary powder coated colours, we believe there is one that will be ideal for your next outdoor and landscaping project.

## Features & Benefits Typical Applications

- » No welding or screwing required
- » DIY & easy to install system
- » Lightweight & Impact resistance
- » Complete kit set
- » Adjustable slats
- » Simple to cut to size on site
- » 15 year durability warranty
- » 10 year coating warranty

- » Fencing
- » Boundary fencing
- » Privacy screening

## Colour Range (Powder Coated)



# ELITESCREEN

An Easy Modular Aluminium Screening Kit With  
A Patented No Weld System



Lifestyle  
Screening

elitescreen.co.nz

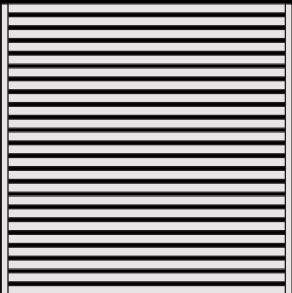




## Product Range

### 1800mm (w) x 1200mm (h) Aluminium Slat Box Contains:

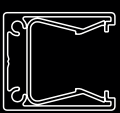
(When assembled, 1xAluminium Slat Box creates 1xEliteScreen panel as depicted below.)



SKU: 2250640 - White  
SKU: 2250641 - Grey  
SKU: 2250642 - Charcoal



16x65mm Slats (1786mm length)



2x1200mm Side Frames



2 x Side Frame End Caps



16 x Self Drilling Wafer Head Screws

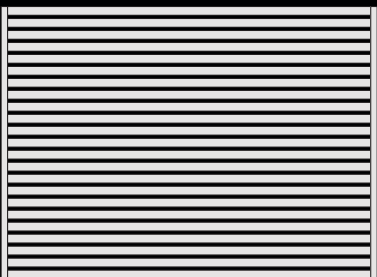


34 x Spacer Blocks

For Louvre EliteScreen you will also need Louvre Brackets

### 2400mm (w) x 1800mm (h) Aluminium Slat Box Contains:

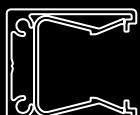
(When assembled 1 x Aluminium Slat Box creates 1 x EliteScreen panel as depicted below.)



SKU: 2250643 - White  
SKU: 2250644 - Grey  
SKU: 2250645 - Charcoal



24 x 65mm Slats (2386mm length)



2 x 1800mm Side Frames



2 x Side Frame End Caps



16 x Self Drilling Wafer Head Screws



34 x Spacer Blocks

1 x Centre Support Rail

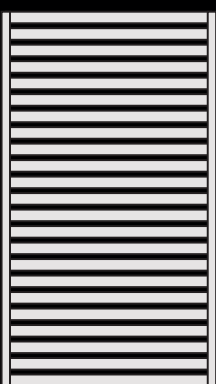


1 x Mid Rail End Cap

For Louvre EliteScreen you will also need Louvre Brackets

### 1000mm (w) x 1800mm (h) Aluminium Slat Box Contains:

(When assembled 1xAluminium Slat Box creates 1xEliteScreen panel as depicted below.)



SKU: 2250646 - White  
SKU: 2250647 - Grey  
SKU: 2250648 - Charcoal



20 x 65mm Slats (964mm length)



4 x 65mm Gate Slats (964mm length)



1 x D&D Latch Packer



2 x 1800mm Gate Side Frame



2 x Top Cap



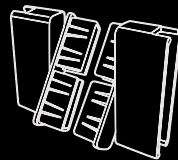
17 x Hex Head Screws

## Accessories

**Choosing your posts & base plates:** 1800mm Posts used for fixing on a deck or concrete base installation. 2400mm Posts for in ground concrete installation.

**Trade tip:** Use side frames to create more screens with offcuts or unused slats from EliteScreen packs.

### Louvre Brackets



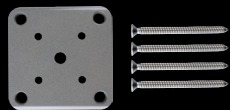
Includes:  
2 x Louvre Brackets  
2 x Fixing Screws

2250681	White
2250682	Grey
2250683	Charcoal

### Base Plate Set 50mm

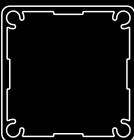
Includes:

Counter Sunk Holes  
4 x 12g 75mm Long Screws (SS304)



2250662	100mm x 100mm	White
2250663		Grey
2250664		Charcoal

### Standard Aluminium Post



50mm x 50mm Full Post Includes:

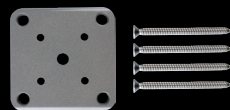
4 x Screw Flutes  
1 x Top Cap

2250650	1800mm (h)	White
2250651		Grey
2250652		Charcoal
2250653	2400mm (h)	White
2250654		Grey
2250655		Charcoal

### Base Plate Set 65mm

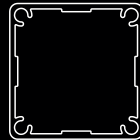
Includes:

Counter Sunk Holes  
4 x 12g 75mm Long Screws (SS304)



2250666	115mm x 100mm	White
2250667		Grey
2250668		Charcoal

### Heavy Duty Aluminium Post



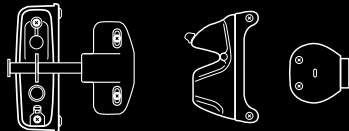
65mm x 65mm Full Post Includes:

4 x Screw Flutes  
1 x Top Cap

2250656	1800mm (h)	White
2250657		Grey
2250660		Charcoal
2259993	2400mm (h)	White
2259994		Grey
2250661		Charcoal

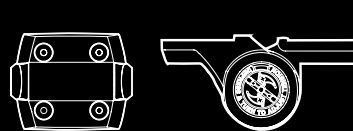
### Pedestrian Gate - Lokk Latch Deluxe

SKU: 2250665 - Black



### Pedestrian Gate - Hinge

SKU: 2250649 - Black



### Aluminium Slats

Includes: 3 x Aluminium Slats

2250669	1800mm	White
2250670		Grey
2250671		Charcoal
2250672	2400mm	White
2250673		Grey
2250674		Charcoal

### Centre Support Rail Set

Includes: Screws End Caps

2250678	1800mm	White
2250679		Grey
2250680		Charcoal

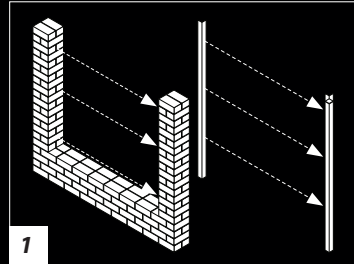
### Frame Set Box

Includes: Screws Frame End Plates

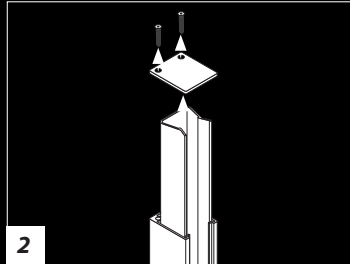
2250675	1800mm	White
2250676		Grey
2250677		Charcoal

2260031	ELI-SPAC-BLK-BLOCK50	Spacer Blocks (x50)
2260033	ELI-POST-CHC-CAP50	Charcoal Top Cap (50mm posts)
2260034	ELI-POST-WHT-CAP50	White Top Cap (50mm posts)
2260035	ELI-POST-GRY-CAP50	Grey Top Cap (50mm posts)
2260036	ELI-POST-CHC-CAP65	Charcoal Top Cap (65mm posts)
2260037	ELI-POST-WHT-CAP65	White Top Cap (65mm posts)
2260038	ELI-POST-GRY-CAP65	Grey Top Cap (65mm posts)

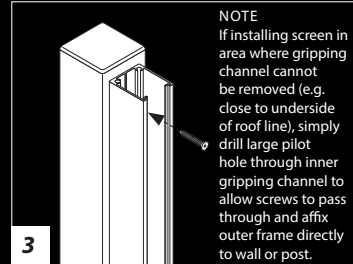
## How To Install - Panels



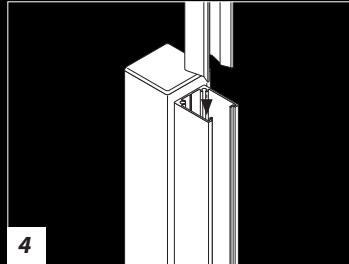
Take measurement between wall or post at 3 points: top, middle and bottom. Take note of the smallest width measurement.



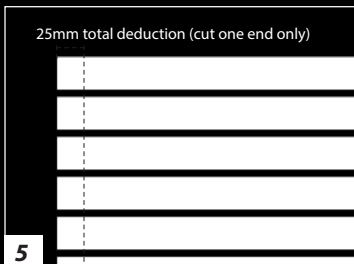
Remove top cap and set aside for later use (Do not remove cap from bottom end of side frame). Slide out the inner gripping channel.



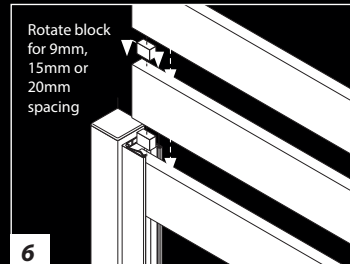
Affix outer frame to post or wall with screws (sold separately).



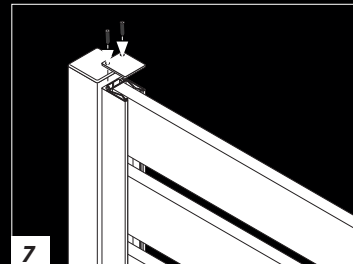
Slide inner gripping channel back into outer frame.



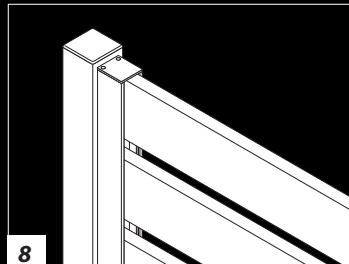
Cut aluminium slats 25mm less than total width of opening. Refer to measurement in step 1. The 25mm deduction takes into account thickness of side frame on both sides of the screen.



Push slats down into side frame ensuring spacer blocks are placed between each slat. Spacer blocks supplied in kit allow slat spacing of 9mm, 15mm or 20mm. If a different spacing is required, source appropriate spacer blocks to achieve your desired slat spacing. Spacer blocks are NOT removed after inserting slats and remain as part of the assembled screen.



Once all slats are in place, carefully reattach top cap with screws.

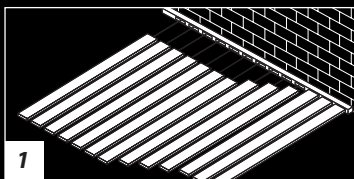


FINISHED!

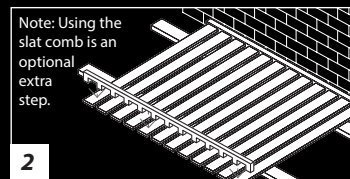
#### HEIGHT ADJUSTMENT

To adjust height simply cut outer frame and inner gripping channel as required to desired height. NOTE: Exact heights depend on spacing of slats. Please take care before cutting side frames to ensure height has been calculated correctly

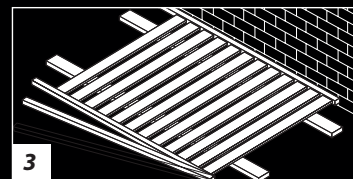
## How To Install - Gates



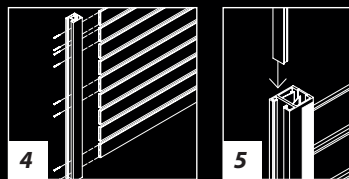
On a flat protected surface, lay 1x gate side frame with slotted spacer infill and rest against a padded stop and tap slats and gate blades into place.



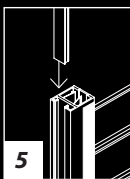
Elevate the slats and gate side frame on two padded bearers to allow the second gate side frame to be attached. Place the slat comb between all slats to prevent any movement of slats in the next step.



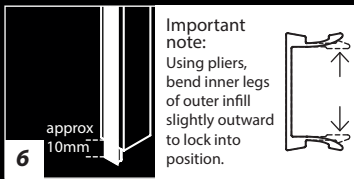
Engage the second gate side frame to the slats and tap the frame until all the slats are fully engaged  
TIP: Start at one end and work slats in from one end to the other.



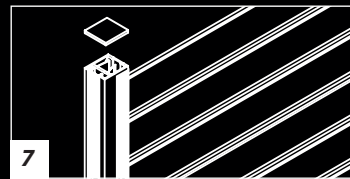
Screw off gate blades at required positions. Ensure gate is square by measuring diagonals.



Slide the 2x outer infills down into position to hide screw heads.



Slide 2x outer infills past end of gate side frame (approx. 10mm), then using pliers, bend inner legs of outer infill slightly outwards. Tap outer infill back to level with gate side frame. This step is required to stop the outer infill from sliding down prior to hardware installation.



Insert top caps into side frames.

**To determine the actual slat width for your gate, make a deduction of 36mm to the overall gate width (outer edge to outer edge of gate side frame)**

**FORMULA:**  
**for slat width**

**OVERALL GATE WIDTH**  
**36MM**

## Tools Required

- » Metal tape measure
- » Spirit level
- » Phillips head screwdriver bit (for drill)
- » Carpenters pencil
- » Power/cordless drill
- » Timber, masonry or steel drill bits (as needed)
- » Drop saw with suitable blade for cutting aluminium (if adjusting height or width)



Lifestyle Screening

ELITESCREEN

elitescreen.co.nz